



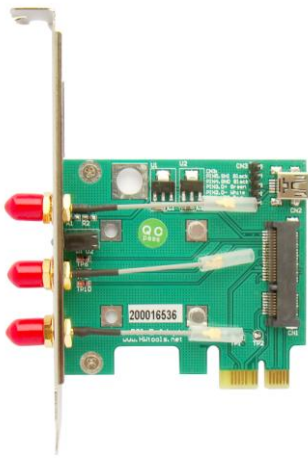
Mini PCI-E to PCI-E Adapter User's Manual

Preliminary

Model: MP2W

FAE2009MP2W_03

June 2009



Bplus Technology Co., Ltd.
5F, No.63, Zhou-Tzyy St., Nei-Hu,
Taipei, Taiwan
(886-2)77210550 TEL
(866-2)87974200 FAX
<http://www.Bplus.com.tw>

CONTENTS

Introduction.....	2
Interface.....	2
Features.....	4
Package contents.....	5
System requirement.....	6
Installation procedure.....	6
Caution.....	11
Maintenance.....	11

1.0 Introduction

The PCI-E Mini Card passive adapter is designed for wireless application on desktop PCs that convert Mini-Card to USB port or standard PCI-Express 1x slot.

You can insert your USB type minicard to this adapter then plug to USB port through USB cable.

Or insert your PCI-E type mini-card into this adapter then insert to PCI-E 1x connector.

2.0 Interface

Mini PCI-E to PCI-E Adapter as shown,

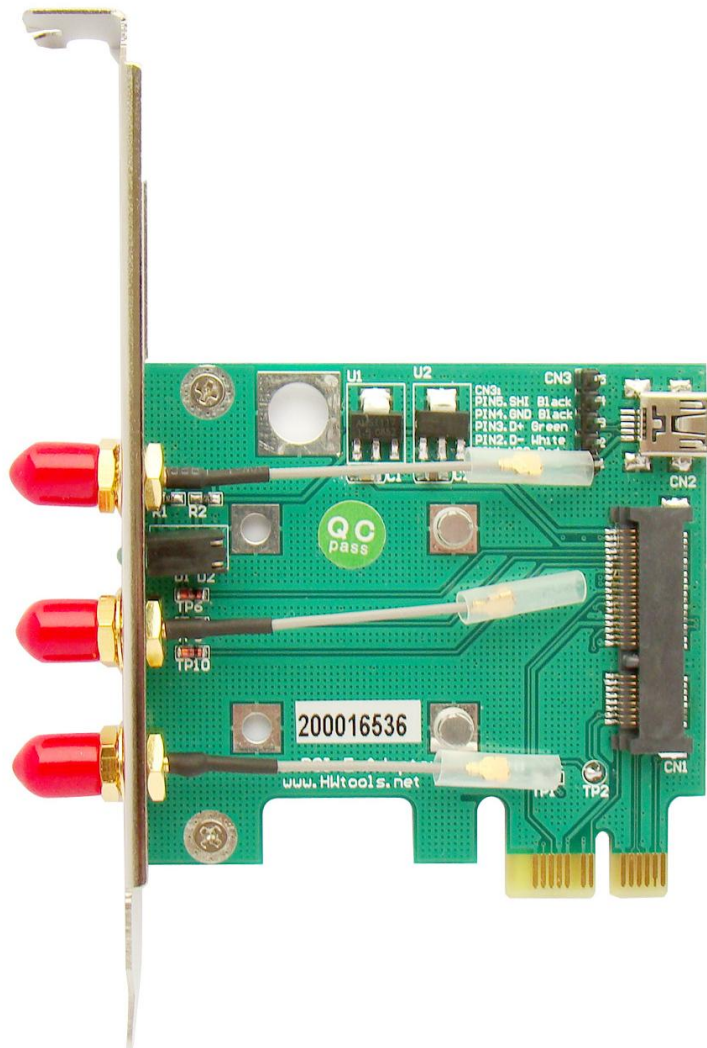


Figure-1 Mini PCI-E to PCI-E Adapter (heads)

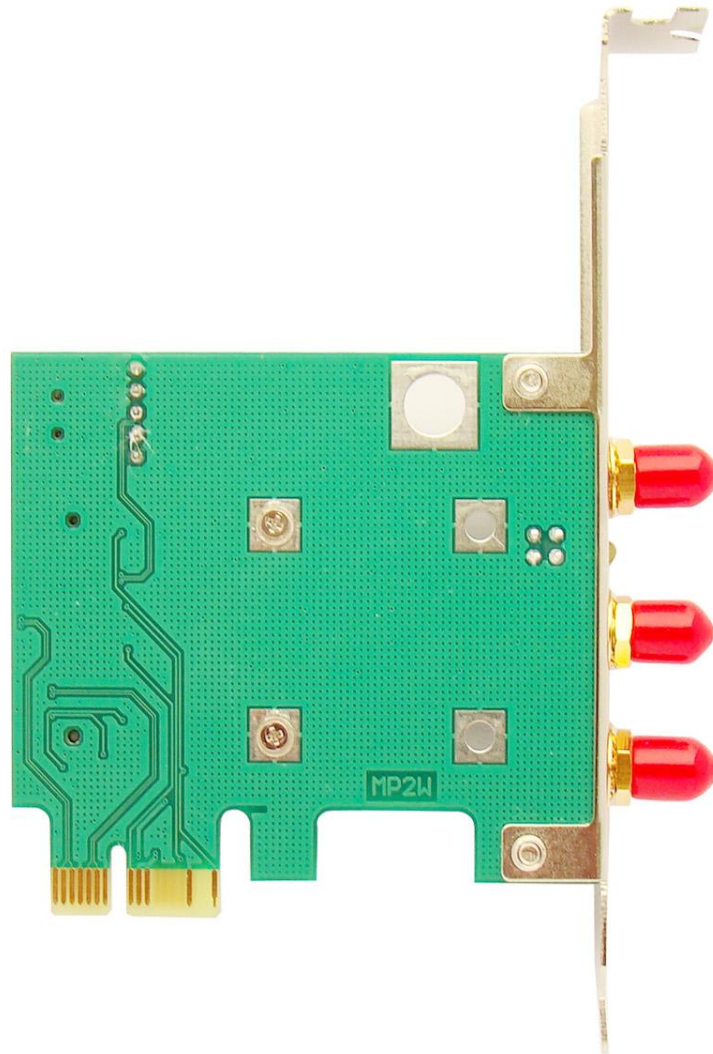


Figure-2 Mini PCI-E to PCI-E Adapter (back)

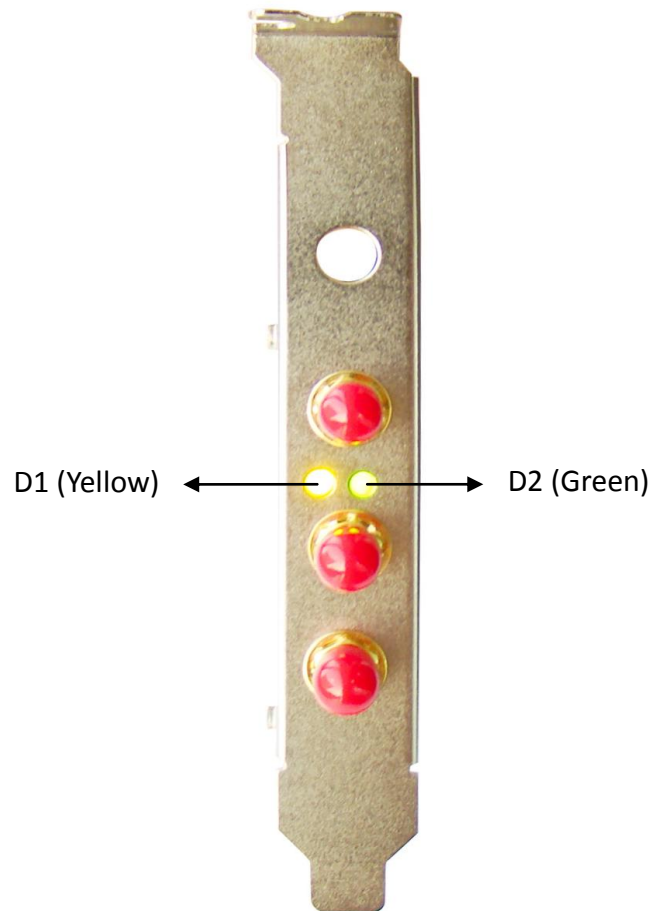
LED State:

1. D1(Yellow):

When the user plugs mini card into Mini PCI-E to PCI-E Adapter, LED D1 (Y) is on. It shows the mini card has been identified by system. When D1 flickers, it shows the device connectivity ok and it works normally.

2. D2 (Green):

When LED D2 (G) is on, it shows the normal operating voltage of mini card.



3.0 Features

- Allows user to test PCI Express Mini modules on the PCI Express slot or USB port
- Supports two primary system bus interface: PCI Express and USB
- Supports all of Mini-Cards such as SSD, Turbo memory, 3G,CDMA, WLAN,WLAN, MODEM Mini Card to desktop PC.
- Supports U.FL/IPX to RP- SMA pigtail WiFi RF cable adapter.

4.0 Package contents

- Mini PCI-E / PCI-E adapter x1
- Accessory: DuPont 5P to DuPont 5P cable x1



- Accessory: IPX to RP-SMA cable x3

u.FL/IPX (Mini-PCI) to RP-SMA pigtail WiFi RF cable adapter



RP-SMA



u.FL (IPX)

5.0 System requirement

- PCI-Express 1x slot or USB port
- Windows 2000, XP, Vista 32/64
- Linux

6.0 Installation procedure

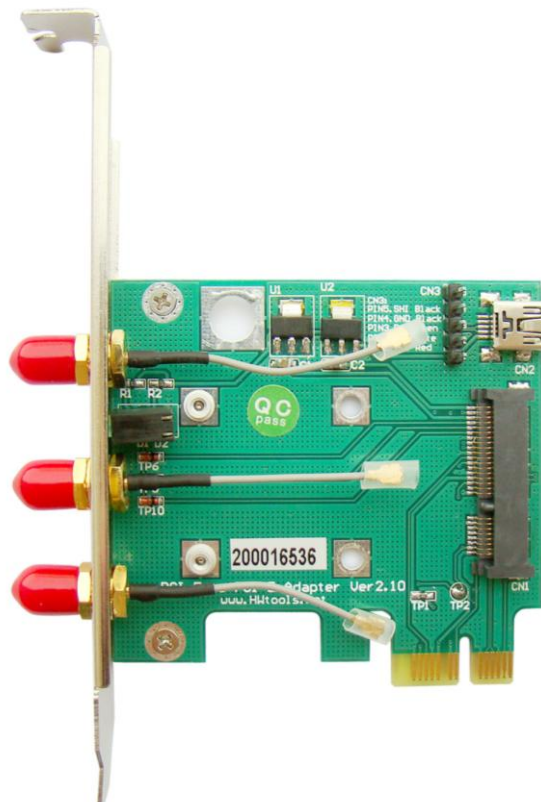
WARNING:

Plug MP2W into PCI-E slot, NOT PCI slot.

Wrong slot plug-in will lead to PC damage.

For Full-Mini Card

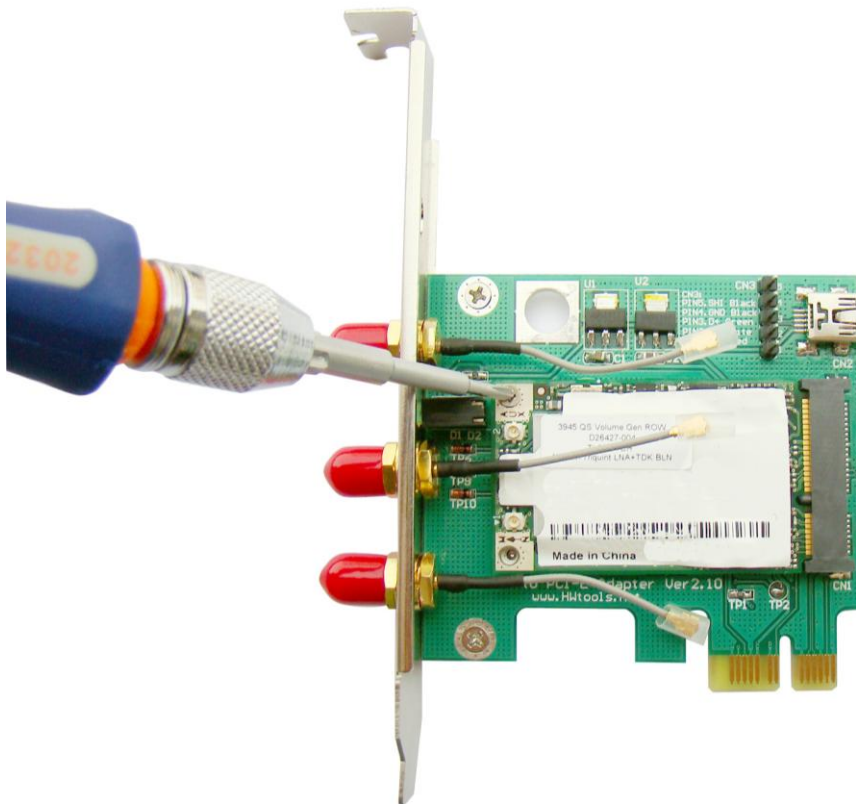
- 1) Remove the caps on screws,



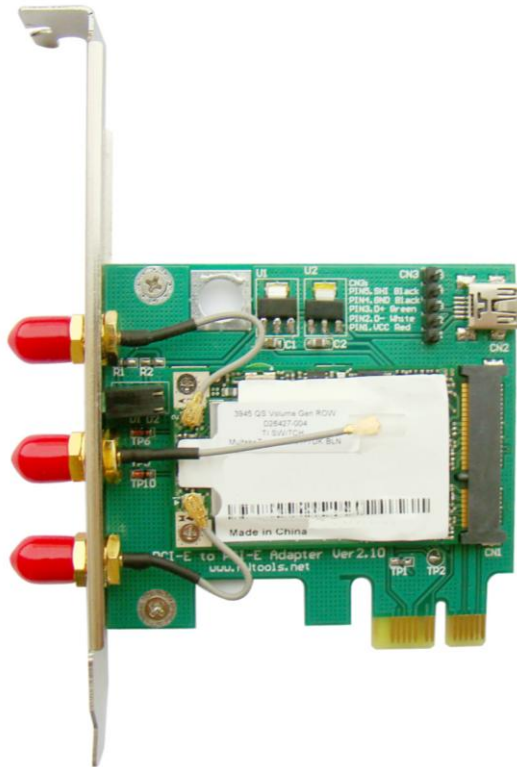
- 2) Plug mini card device such as wireless LAN card into mini PCI-E connector with inclined angle.



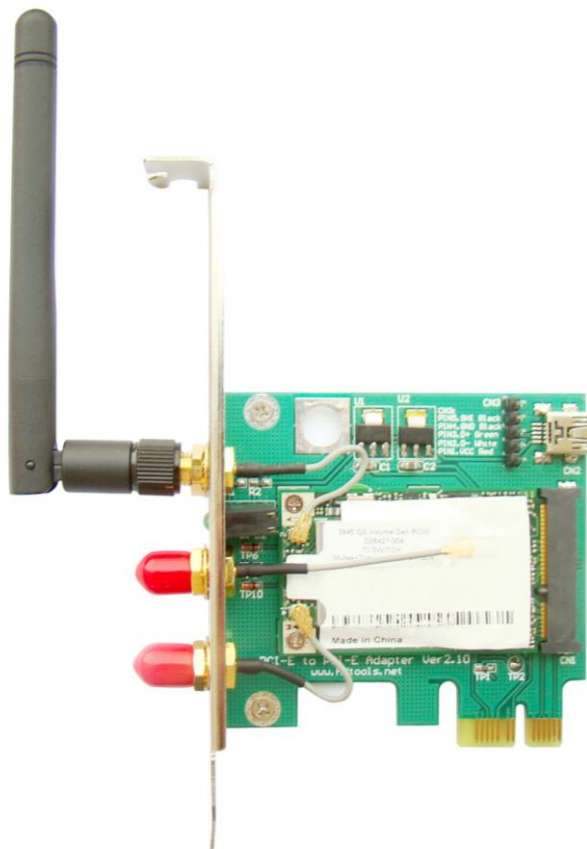
The other side should be fixed by two screws.



- 3) Please ensure fix the antenna IPX CONN on mini card exactly.

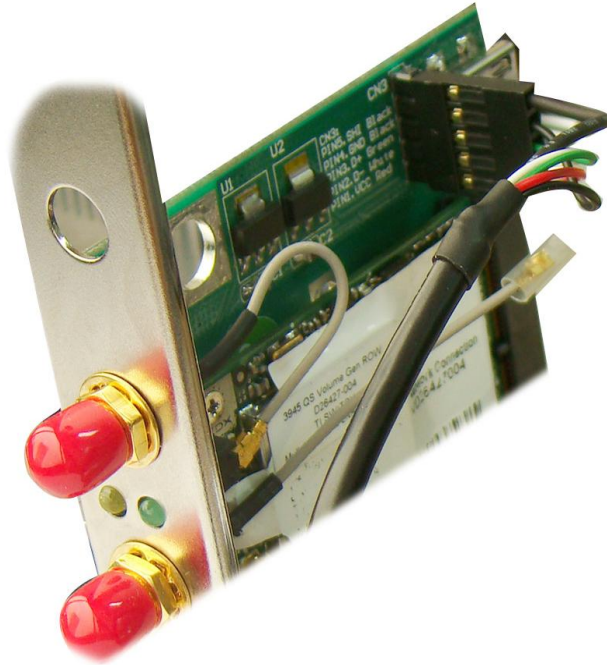


- 4) Put the wireless antenna on the RP-SMA CONN.



When the user inserts DuPont 5P cable into MP2W, please check the correct position.

Ensure red line points to PIN1.Vcc Red as identified on MP2W.

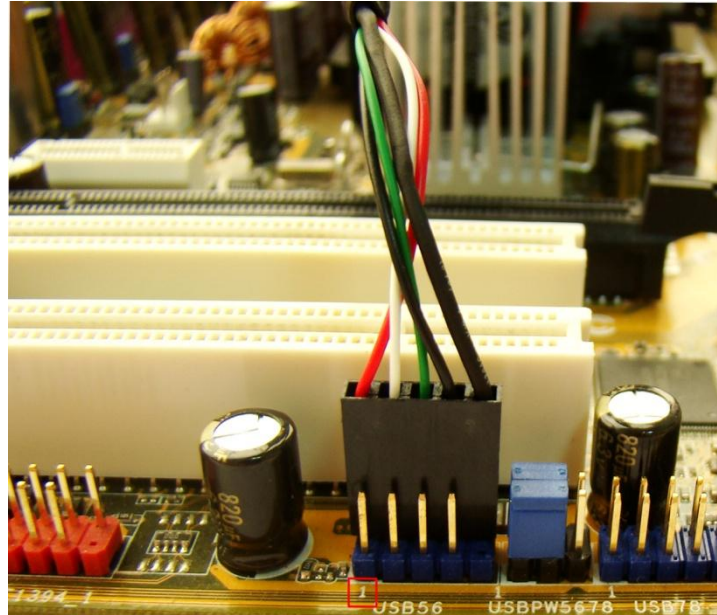


- 5) Before the user plugs PCI-E connector into PC M/B, please ensure cut off the PC power firstly, then continue plug-in. **Do not deal with it when energized, incorrect approach will lead to product damage.**



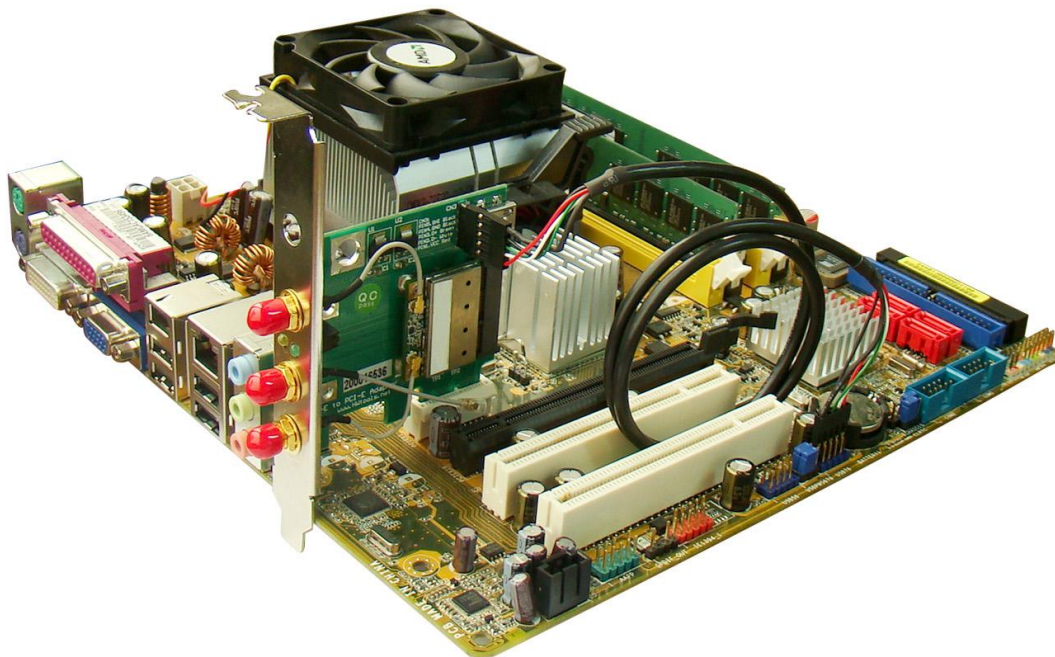
When the user inserts DuPont 5P cable into PC M/B, please check the correct position.

Ensure red line points to No. "1" USB port . Please reference user's manual of PC M/B. Not inverse it.



For Half-Mini Card

The installation is same to Full-Mini Card.



7.0 Caution

Before PCI-E mode performs, please cut off the PC power, also as the same to the remove. The incorrect action will lead to product damage.

All products specifications are subject to change without notice.

Bplus reserves the right to modify the products in its line during the course of the year.

8.0 Maintenance

There is no guarantee while PC power is on and MP2W is been removing.

Please contact the distributer for more details.